

# Blood Basics Review

Name \_\_\_\_\_

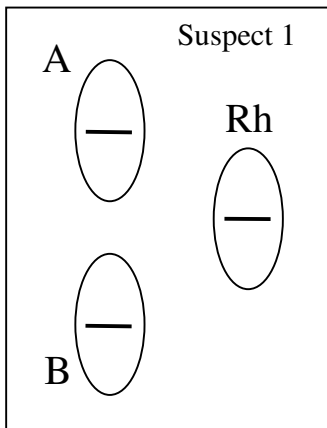
## Across

- Indicates the presence of a specific protein; discovered while studying Rhesus monkeys
- People with Type O blood are called universal \_\_\_\_\_, because they can give blood to anyone
- Clotting factors in our the plasma that clot together to prevent blood loss from a wound
- Type of blood stain created by the force of gravity an appears as drops or blood pools
- Blood type that does not contain A or B agglutinogens
- Type of bloodstain that is created when a force is applied to the source of the blood, such as cast-off, impact spatters, and arterial spurring
- Our blood type is determined by these, which are inherited from our parents
- Component of blood that is part of the our immune system and destroy pathogens in our body
- Bloodstains created by the application of force to the area where the blood originated
- Pointed edges of a droplet that radiate out from the spatter and can help to determine the direction of force
- Blood type that contains B agglutinogens
- Yellowish liquid part of the blood
- Used by investigators to detect the presence of blood

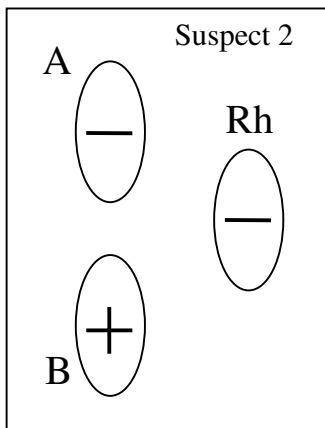
## Down

- People with Type AB blood are called universal \_\_\_\_\_, because they can receive blood from anyone.
- Most abundant cells in our body that are produced in the bone marrow
- Blood type that contains both A and B agglutinogens
- Protein found in red blood cells that carries oxygen
- Patterns created when a bloody object comes in contact with another surface; also called contact patterns
- Stands for bloodstain pattern analysis
- Blood type that contains A agglutinogens
- Test used at a crime scene to enhance a bloodstain to make it more visible in photographs

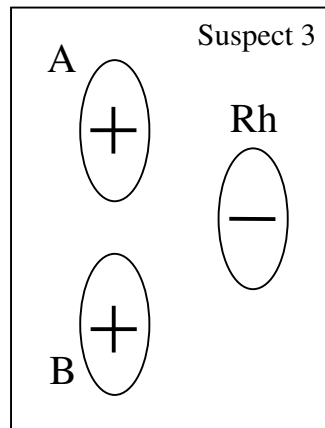
21. Identify the blood type of each sample given the test results. + = clumping, - = no clumping



Blood Type: \_\_\_\_



Blood Type: \_\_\_\_

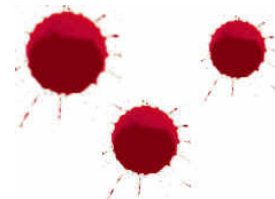


Blood Type: \_\_\_\_

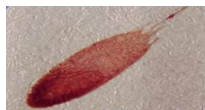
If Suspect 1 were injured during the crime and needed blood, what blood types could he receive?

If Suspect 2 volunteered to donate blood, which blood types could receive his blood?

22. Which of the three blood droplets shown would have been created by a wound in the lower part of the leg? Explain. (2 points)



23. If you found a blood droplet as shown below at a crime scene, what does it tell you? Explain (2 points)



24. If you find a trail of blood with droplets that are very close together, what could this mean? (1 point)